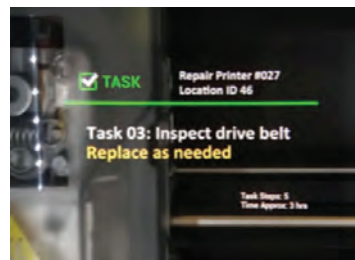
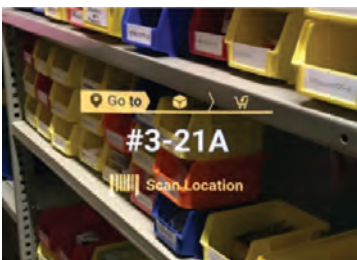


## FACT SHEET

HD4000 ENTERPRISE HEAD-MOUNTED DISPLAY



**ZEBRA**  
CAPTURE  
YOUR EDGE



Put the right information at the right time, right in front of your workers' eyes to increase task efficiency and accuracy. For example, in a warehouse, you can direct users to the right pick locations and verify their picks, improving accuracy, accelerating task times and reducing ramp-up times. Display step-by-step instructions for production assembly workers with real-time visual documentation. And provide hands-free instructions to repair technicians to enable more rapid completion of error-free repairs to reduce equipment downtime.

## HD4000 Enterprise Head-Mounted Display

### Improve productivity and task accuracy with hands-free directed-action workflows

With the first of its kind HD4000 Enterprise Head-Mounted Display, you can boost task efficiency and accuracy by overlaying the most relevant contextual information over your workers' real-time field of view. Now, hands and eyes are always free to focus on tasks — instead of interacting with an application on a mobile computer to obtain the same data. Imagine how many additional 100% accurate pick orders warehouse workers can complete every day. Imagine how many more pieces of equipment technicians can repair every day. And imagine how much faster and more accurately assembly workers can build your products, increasing production without expanding your production lines or your workforce. You have just imagined the power of hands-free directed-action workflows, made possible with the HD4000.

The HD4000 delivers everything you need in an enterprise-class mobile device accessory. Rugged design, built to last for years despite all-day everyday drops, bumps and spills. Comfort. Easy to see crisp display. Easy to use — just plug it into the host mobile device and turn it on. Easy to deploy — no additional batteries or staging required. And with a Software Development Kit (SDK) and ready-to-use Application Programming Interfaces (APIs), it's easy to integrate the HD4000 into existing and new applications.

Get more out of your workforce and your Zebra mobile computers with the state of the art, industry-first HD4000 — only from Zebra.

## FACT SHEET

HD4000 ENTERPRISE HEAD-MOUNTED DISPLAY

### Perfectly engineered for comfort

#### Crisp, sharp image quality

Developed in collaboration with Six15 Technologies, a leader in innovation in wearable optical displays, the HD4000 offers best-in-class see-through display technology. You get unmatched color, contrast and image clarity. And the focal distance is optimized for head-mounted applications, minimizing eye fatigue.

#### So light your workers will forget they are wearing glasses

The HD4000 integrates only those components required to deliver augmented reality functionality — a display, camera, head tracker and microphone — there's no battery, processor or WiFi or cellular radio required. At less than 1.06 oz./30 g, the HD4000 is significantly lighter than any other enterprise wearable display on the market. Your workers will barely feel these feather-light glasses, ensuring all-day comfort without fatigue.

### Ready for your most demanding enterprise environments

#### Drop-proof, dust-proof and waterproof

Finally, a wearable display that matches the rugged design of your Zebra mobile computer. With IP67 sealing, the HD4000 is virtually impervious to dust and can survive a hose down and complete immersion in water. And with a 5 ft./1.5 m drop specification, you get reliable operation, despite inevitable everyday drops.

#### Flexible design to fit practically every worker

The fully adjustable frame mount accommodates left and right eye use, a wide range of inter-pupillary distance positioning, as well as prescription glasses. And you can change the HD4000 from right eye to left eye in seconds. The result? No eye strain and an all-day comfortable viewing experience for all of your workers.

#### Remove from your view in a split second

If the display is distracting a worker during a conversation with a supervisor or co-worker — or preventing the visibility required in a dangerous situation — workers can simply flip it up and out of view.

### Hygienic design made for sharing

The HD4000 mounts to commercial, off-the-shelf safety glasses — no tools required. So you can give each worker their own personal pair of glasses, improving hygiene and helping prevent the spread of germs.

### Fast deployment — and easy application integration

#### No batteries required

Just connect the HD4000 with your Zebra host mobile computer via the proper cable to provide needed power. Since the HD4000 uses less than one watt, there is little impact on the host mobile device battery. And since the host mobile device batteries are hot-swappable, the mobile device and the HD4000 can serve your workers around-the-clock.

#### Simple accessory architecture for maximum functionality and minimum weight

The HD4000 utilizes the enterprise-class battery, processor and WiFi or cellular radio in the host Zebra mobile device via its USB 2.0 cable. You enjoy maximum battery power and battery cycle times, maximum processing power, plus dependable and fast WiFi or cellular connections, all delivered via the Zebra mobile devices you already own. The result? You can deploy wearable displays with little impact on IT time and cost. There are no additional batteries to change. No additional battery pools to manage. No integrated wireless radios to configure and certify on your network. And no operating system (OS) updates and version control required.

#### Simple and robust application support

The Android HD4000 SDK supports many standard interfaces, simplifying the development of customized applications that present the pertinent, contextual information workers need to perform the best next step. You can use the HD4000 display as a second screen via Android presentation mode. To simplify integration in the warehouse, we provide ready-to-use Zebra Warehouse Templates for fast and simple integration with leading Warehouse Management System (WMS) applications. And ready-to-use Application Programming Interfaces (APIs) make it easy to integrate with applications in any vertical market.

### Display Characteristics

#### Display

Full color OLED  
640 x 400 pixels

#### Field of View

20.3° diagonal

#### Eye Box

7.5 mm x 9 mm

#### Eye Relief

18 mm

#### Brightness

300 cd/m<sup>2</sup>

### Sensor Characteristics

#### Camera

5 MP, fixed focus

#### Head Tracker

9-axis integrated sensor

#### Audio

Integrated microphone

### System Characteristics

#### Connectivity

USB 2.0

#### Host Device Connectivity

Android (5.0 and higher)  
and Windows 10

#### Frame

ESS Crosshair ONE Frame  
(ANSI Z87.1+)

### Physical Characteristics

#### Weight (without cable)

<1.06 oz./<30g

### Rugged Characteristics

#### Sealing

IP67 (waterproof  
and dustproof)

#### Drop Specification

5 ft./1.5 m (to concrete)

#### Operating Temperature

-4° F to 122° F  
-20° C to 50° C

**Maximize workflow efficiency, productivity and the value of your mobile computers with the HD4000 from Zebra — the only see-through wearable display built for the enterprise.**

**For more information, visit [www.zebra.com/hd4000](http://www.zebra.com/hd4000)**



**NA and Corporate Headquarters**  
+1 800 423 0442  
inquiry4@zebra.com

**Asia-Pacific Headquarters**  
+65 6858 0722  
contact.apac@zebra.com

**EMEA Headquarters**  
zebra.com/locations  
contact.emea@zebra.com

**Latin America Headquarters**  
+1 847 955 2283  
la.contactme@zebra.com